

HUBERT ZANDBERG



An irrepressible creative energy suffuses Hubert Zandberg's designs. With a desire to create 'culturally informed, textured interiors', he sets high standards. Rooms are beautifully tailored, luxurious and serene. 'We often draw on eighteenth-century references, the Forties and modernism for inspiration,' he says.

Background Hubert was born in South Africa and has worked in interior design for over 20 years. After a stint at Champion Zandberg, the company he set up with David Champion, he set up his own architectural and interior-design service in 2002. Today, he has a team of 12 architects and interior designers at his W10 studios.

Projects Ongoing work includes the renovation of a mansion in Paris, the refurbishment of a penthouse in St Moritz and a villa in Qatar, alongside a country house and a penthouse in Moscow and a host of London town houses.

Industry recommendation 'Hubert creates well-balanced, sophisticated, contemporary interiors, with classic influences and eclectic additions,' says furniture designer Rupert Bevan.

✉ 020-8962 2776; hzinteriors.com

HUGH LESLIE



Consistently busy with high-end residential projects, Hugh Leslie is an interior architect with a gimlet

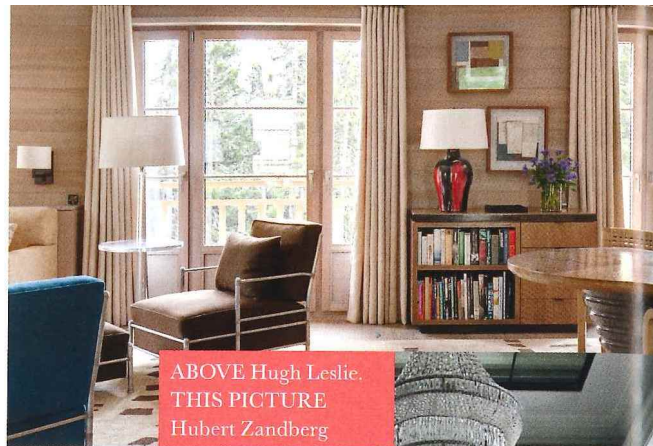
eye. He wears his 30 years' experience lightly: no two interiors look the same. Sometimes featuring a flash of brilliant colour, or perhaps a piece of expertly chosen modern art, his interiors look sharp, with an intelligent vibe.

Background Hugh studied design and interior architecture in New Zealand, before coming to England in 1987. He has worked variously for Sibyl Colefax & John Fowler, Mlinaric, Henry & Zervudachi, and Chester Jones. He set up his practice in 2002 and has a 'hand-picked' team of five, including two architects, at his SW7 base.

Projects Hugh is working on the interior design of a 1,100-square-metre Victorian house in Hampshire, two houses and an apartment in Chelsea, and the 400-square-metre Gibraltar House in west London.

Which rules do you break? 'I hope I break all the rules. No designer I respect follows them.'

✉ 020-7584 7185; hughleslie.com



ABOVE Hugh Leslie.
THIS PICTURE
Hubert Zandberg



ABOVE Ilse Crawford.
BELOW Indigo
Design Associates



LESLE WILKINSON, JOE CONDON, SHANE UPTON, PAUL MASSET, ROBS SANDERSON

I IS FOR...

ILSE CRAWFORD



NEW ENTRY Designer, academic and creative director Ilse Crawford is queen of the design scene, and in 2014 was awarded an MBE for outstanding services to interior design. Ilse's interiors are graceful and tactile: thoughtful design at its best.

Background Ilse was the founding editor of *Elle Decoration* UK, where she remained until 1998, and in 2001 she founded the Department of Man and Well-being at the influential Design Academy Eindhoven. In 2003 she launched Studioilse, a Bermondsey-based practice. She and a team of 20 focus on a mix of interior architecture and selected product design.

Projects Fiercely protective of clients' privacy, Studioilse will only reveal that current projects include private homes in London and the refit of a Thirties motor yacht. The Anya Hindmarch flagship store on Madison Avenue in New York and Duddell's restaurant in Hong Kong were completed in 2013. Ilse's latest book, *A Frame for Life* (Rizzoli, £35), was published in 2014.

Greatest source of inspiration? 'Watching people to see how they inhabit a place. I am fascinated by how design can change behaviour.'

✉ 020-7928 0550; studioilse.com

INDIGO DESIGN ASSOCIATES



NEW ENTRY Iona and Colin Duckworth are a husband-and-wife team with a winning combination of interior and architectural design skills. 'We create homes for people to enjoy and cherish,' Iona says. This energetic practice is much in demand, creating designs for modern living: clean lines, colour and judicious use of pattern.

Background While Iona trained at the Inchbald School of Design, followed by a decade at Mlinaric, Henry & Zervudachi, Colin worked with John Stefanidis, then at Charles Hammond, before setting up his own practice. Colin and Iona launched Indigo Design Associates in Fulham in 2003 and have a team of seven.

Projects They are working on the renovation of a shooting lodge in Yorkshire, a large residential project in Regent's Park and the refurbishment of a large house in Kensington. They've recently completed several boutique hotels in Norfolk.

What's your tip for a great interiors find? 'I love Pimlico Road for shops such as Rose Uniacke (roseuniacke.com) and Lamberty (lamberty.co.uk), where we recently bought a beautiful table.'

✉ 020-7386 0094; indigo.gb.net